

# Hematopoietic Stem Cell and Myelodysplastic Syndromes (MDS) Symposium

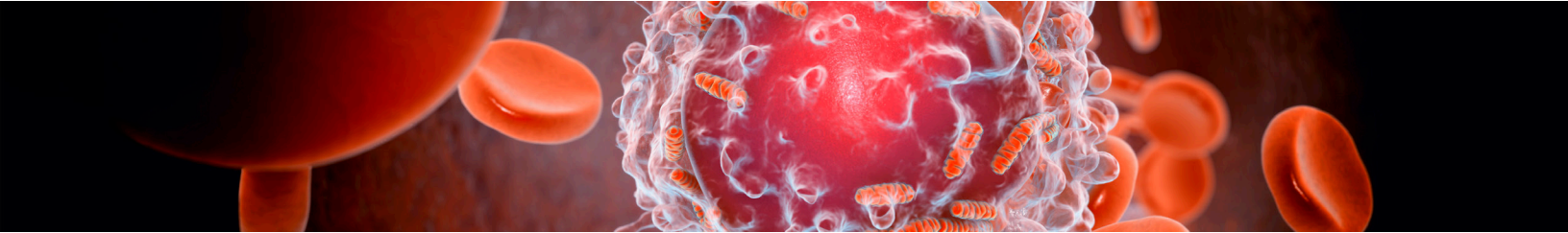
May 6-7  
**2026**

Onstead Auditorium, Floor 3  
**6767 Bertner Ave.**  
**Houston, TX 77030**



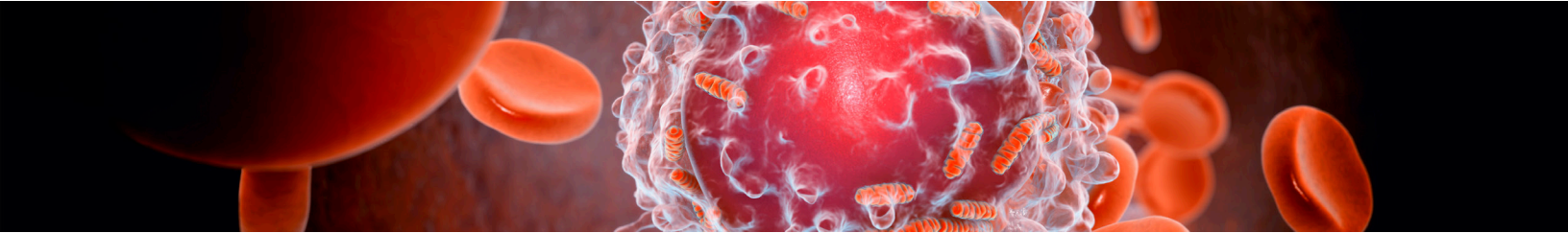
[MDAnderson.Cloud-CME.com/2026MDS](https://MDAnderson.Cloud-CME.com/2026MDS)

~~Cancer~~  
UT MD Anderson

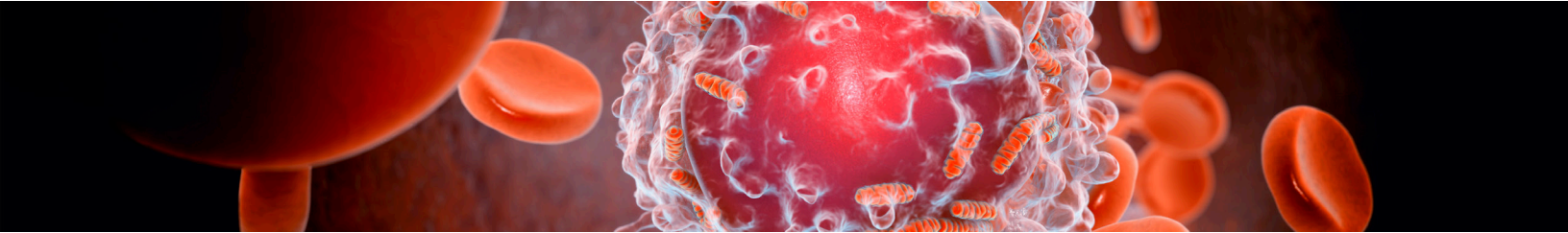


## May 6

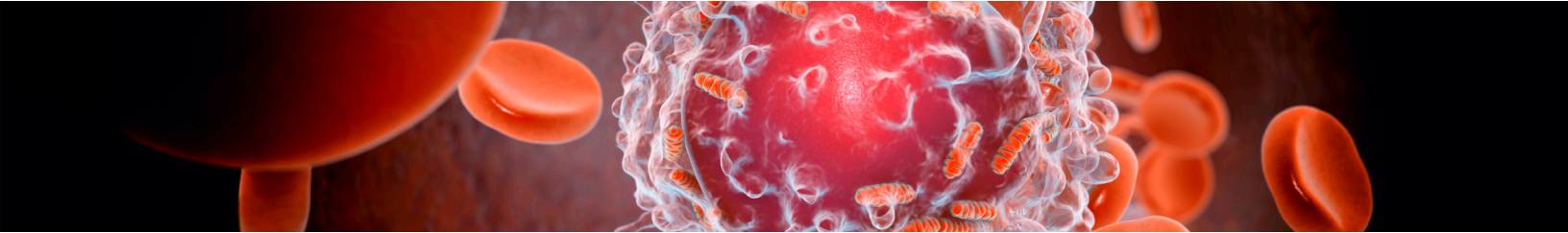
Time	Presentation	Speaker
7:30 a.m.	Breakfast and Registration	
8 a.m.	Welcome	<b>Simona Colla, PhD - Course Director</b> The University of Texas MD Anderson Cancer Center
8:10 a.m.	Introduction	<b>Guillermo Garcia-Manero</b> The University of Texas MD Anderson Cancer Center
<b>HSCs in steady state and under stress</b> Section moderator: Simona Colla, PhD		
8:15 a.m.	<b>Keynote:</b> Leukemic stem cell heterogeneity and plasticity dictates AML patients therapy response and resistance	<b>Prof. Dr. Andreas Trumpp</b> HI-STEM gGmbH and German Cancer Research Center
9 a.m.	Proteostatic regulation of hematopoietic stem cells	<b>Sean Morrison</b> The University of Texas Southwestern Medical Center
9:15 a.m.	Dietary caffeine regulates hematopoietic stem cell aging	<b>Nina Cabezas-Wallscheid</b> Max Planck Institute
9:30 a.m.	Clonal non-genetic mechanisms in normal, and (pre)malignant hematopoiesis	<b>Alejo Fraticelli</b> IRB Barcelona
9:45 a.m.	Targeting EBF1-ITGB8 axis in the bone marrow niche as a promising therapeutic approach for myelofibrosis	<b>Marta Derecka</b> St Jude Research Hospital
10 a.m.	Discussion	
10:15 a.m.	Break and Exhibits	
<b>Predisposition to myeloid malignancies</b> Section Moderator: Ali Nasrollahzadeh		
10:30 a.m.	<b>Keynote -</b> Germline predisposition to MDS	<b>Lucy Godley</b> Northwestern University



<b>Time</b>	<b>Talk Title</b>	<b>Speaker</b>
11:15 a.m.	Clonal trajectories and clinical consequences of somatic gene rescue in SAMD9/9L syndromes	<b>Marcin Wlodarski</b> St Jude Research Hospital
11:30 a.m.	Nonrandom side of evolution: intrinsic, extrinsic and genetic skewing of clonal selection	<b>Jaroslawn Maciejewski</b> Cleveland Clinic
11:45 a.m.	Clinical utility of clonal hematopoiesis in the IBMFS with germline predisposition to hematologic malignancy	<b>Emma Groarke</b> National Institute of Health (NIH)
12 p.m.	Applying functional genomics to identify cryptic telomere biology disorders	<b>Christopher Relly</b> Dana Farber Cancer Institute
12:15 p.m.	Early intervention experience of sirolimus for patients with germline RUNX1 FPD/MM	<b>Courtney DiNardo</b> The University of Texas MD Anderson Cancer Center
12:30 p.m.	MDS in VEXAS	<b>Bhavisha Patel</b> National Institute of Health (NIH)
12:45 p.m.	Discussion	
1:00 p.m.	Lunch and Exhibits	
1:45 p.m.	Working together to advance MDS biology and patient care	<b>Matteo Della Porta</b> Humanitas Cancer Center
2 p.m.	<b>Meet the editors moderator:</b> Iannis Aifantis and Tim Grauber	<b>Editors:</b> Tanya Bondar and Alexia-Ileana Zaromytidou
<b>Clonal Hematopoiesis in Cancer</b> Section Moderator: Kelly Chien		
2:30 p.m.	Targeting metabolism in myeloid pathogenesis	<b>Eric Pietras</b> University of Colorado



<b>Time</b>	<b>Talk Title</b>	<b>Speaker</b>
2:45 p.m.	Autoinflammatory Diseases and MDS	<b>David Beck</b> New York University Langone
3 p.m.	Somatic mutations and clonal expansions in normal and non-malignant human tissues	<b>Ruoyan Li</b> The University of Texas MD Anderson Cancer Center
3:15 p.m.	Physiological aneuploidy during functional differentiation and damage repair in the pancreas	<b>Andrea Viale</b> The University of Texas MD Anderson Cancer Center
3:30 p.m.	Discussion	
3:45 p.m.	Break and Exhibits	
4 p.m.	Meet the editors request	
<b>Young investigator symposium</b> Section Moderator: Teresa Bowman		
4 p.m.	Guiding Minds, Growing Leaders	<b>Teresa Bowman</b> Albert Einstein Institute
4:15 p.m.	Policlinico Hospital of Milan. Stress adaptation in splicing factor-mutant myeloid malignancies	<b>Beatrice Maffeo</b> Policlinico Hospital of Milan
4:30 p.m.	Clonal hematopoiesis in telomere biology disorders: U2AF1S34 mutations rule the games	<b>Nat Thongon</b> The University of Texas MD Anderson Cancer Center
4:45 p.m.	RNP granules in hematology: mechanisms and malignancies	<b>Giulia Biancon</b> Policlinico Hospital of Milan
5 p.m.	From genetics to disease models: understanding leukemia initiation	<b>Sushree S. Sahoo</b> St Jude Research Hospital



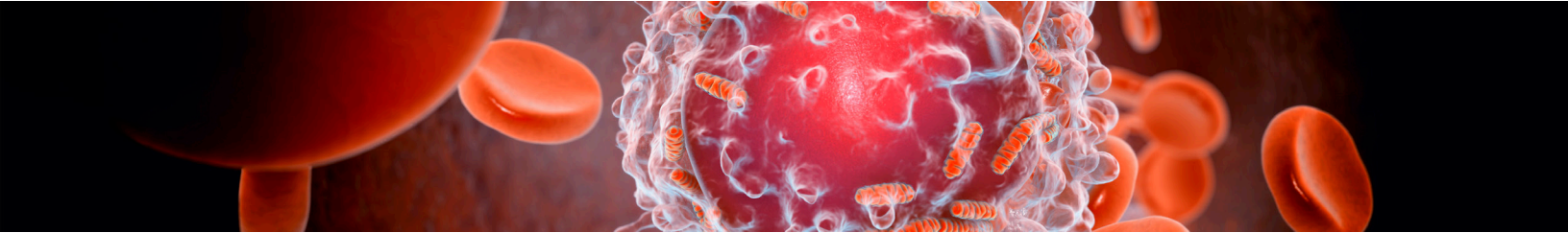
<b>Time</b>	<b>Talk Title</b>	<b>Speaker</b>
5:15 p.m.	Targeting disease initiating cells in hematological malignancies	<b>Saravanan Ganesan</b> Cornell University
5:30 p.m.	Characterization of response and resistance to hypomethylating agents in MDS and MPN using single-cell multi-omics	<b>Max Dougherty</b> Mount Sinai Institute
5:45 p.m.	Deciphering ontogenies of clonal evolution in SAA	<b>Fernanda Gutierrez Rodriguez</b> The University of Texas MD Anderson Cancer Center

## May 7

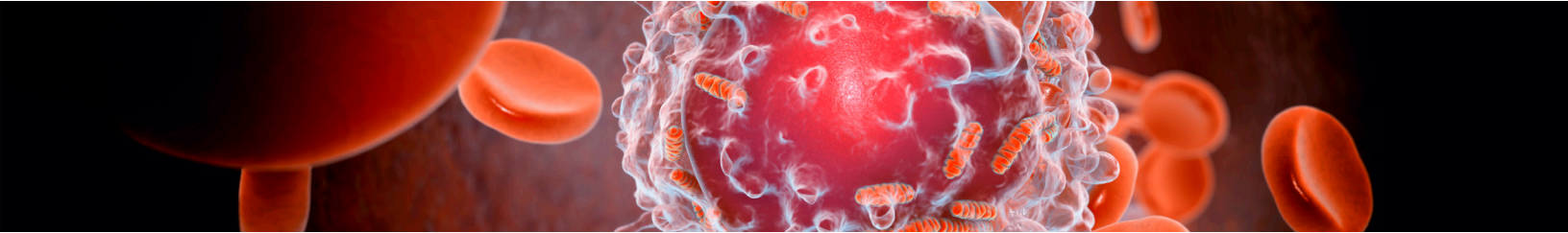
<b>Time</b>	<b>Talk Title</b>	<b>Speaker</b>
8 a.m.	Breakfast and Registration	
8:20 a.m.	Welcome	<b>Simona Colla, PhD - Course Director</b> The University of Texas MD Anderson Cancer Center
8:25 a.m.	Introduction	<b>Guillermo Garcia-Manero</b> The University of Texas MD Anderson Cancer Center

### MDS: new advances in understanding the biology (1) Section Moderator: Francesco Pesce

8:30 a.m.	<b>Keynote:</b> Understanding and targeting splicing factor mutant MDS	<b>Omar Abdel-Wahab</b> MSKCC
9:15 a.m.	Structural Determinants of hematopoietic dysfunction in MDS	<b>Stavroula Kousteni</b> Columbia University
9:30 a.m.	Rescuing inefficient erythropoiesis in myelodysplastic syndromes with ringed sideroblasts	<b>Simona Colla</b> The University of Texas MD Anderson Cancer Center
9:45 a.m.	The role of the MYDDOSOME and aberrant inflammatory response in MDS induction	<b>Iannis Aifantis</b> New York University Langone



<b>Time</b>	<b>Talk Title</b>	<b>Speaker</b>
10 a.m.	Novel paradigms in inflammatory signaling driving myeloid malignancies	<b>Daniel Staczynowski</b> Cincinnati Children's Hospital
10:15 a.m.	Quantitative assessment of transformation of MDS to AML	<b>Paresh Vyas</b> University of Oxford
10:30 a.m.	<b>Discussions</b>	
10:45 a.m.	Break and Exhibits	
<b>MDS: new advances in understanding the biology (2) using novel technologies</b> Section Moderator: Koichi Takahashi		
11 a.m.	The clonal evolution of myeloid leukemia	<b>Eirini Papapetrou</b> Mount Sinai Institute
11:15 a.m.	Insights into leukemia evolution from iPSC models	<b>Sergei Doulatov</b> Columbia University
11:30 a.m.	MHC II-expressing bone marrow megakaryocytes activate CD4+ T cells to maintain HSCs and induce regulatory T cell fate	<b>Kellie Machlus</b> Boston Children Hospital
11:45 a.m.	Uncovering mechanisms of MDS evolution and therapy resistance through single-cell multiomics approaches	<b>Francesca Ficara</b> Humanitas Cancer Center
12 p.m.	Leveraging the METTL3i induced DNA damage in MDS/sAML	<b>Stephanie Halene</b> Yale University
12:15 p.m.	Cross-talk between succinic acid and epigenetic modifications in models of health and disease	<b>Simone Sidoli</b> Albert Einstein Institute
12:30 p.m.	Discussions	
12:45 p.m.	Lunch and Exhibits	



<b>Time</b>	<b>Talk Title</b>	<b>Speaker</b>
1:30 p.m.	Meet the Editors	
2:15 p.m.	Results from the Verona Trial. Venetoclax in frontline MDS: yes or not?	<b>Garcia-Manero</b> The University of Texas MD Anderson Cancer Center
<b>MDS: New advances in understanding the therapy</b> Section Moderator: Alex Bataller		
2:45 p.m.	Inflammation and aging in MDS	<b>Valeria Santini</b> University of Florence
3 p.m.	Distinct Immunophenotypic Footprints in AML: How CLAD/LDAC/VEN and HMA+VEN Differentially Reshape Monocytes and Stem Cells	<b>Sanam Loghavi</b> The University of Texas MD Anderson Cancer Center
3:15 p.m.	Immune checkpoint inhibition for MDS: Is there a way forward?	<b>Amer Zeidan</b> Yale University
3:30 p.m.	MDS Immunome; what's beyond somatic mutations	<b>Sharam Kordasti</b> King's College London
3:45 p.m.	A translational perspective on disease evolution and treatment response in MDS	<b>Matteo Della Porta</b> Humanitas Cancer Center
4 p.m.	TP53-Mutated MDS: From heterogeneous biology to transplant decision-making	<b>David Valcarcel</b> University Hospital Vall d'Hebron in Barcelona
4:15 p.m.	Genomic determinants of CMML: Bridging the gap for new drug development	<b>Guillermo Montalban Bravo</b> The University of Texas MD Anderson Cancer Center
4:30 p.m.	<b>Discussions</b>	
4:45 p.m.	Adjourn	